

Bestellcode EPMS® Ordercode EPMS®

EPMS	1	2	3	4	5	6	7	8
------	---	---	---	---	---	---	---	---

Pos. 1	Montageflansch <i>Mounting flange</i>
frei omit	SAE A-4, vier Befestigungslöcher <i>SAE A-4, four holes</i>
A	SAE A-2, zwei Befestigungslöcher <i>SAE A-2, two holes</i>
F	Magnetoflansch, vier Befestigungslöcher <i>Magnetoflange, four holes</i>
Q	Quadratflansch, vier Befestigungslöcher <i>Square flange, four holes</i>
B	Motor mit Trommelbremse <i>Motor with drum brake</i>
S	Kurzeinbau <i>Short mount</i>
V	Sehr kurzer Einbau <i>Very short mount</i>
U	Ultra kurzer Einbau <i>Ultra short mount</i>
W	Radflansch <i>Wheel flange</i>
Pos. 2	Anschlussstyp <i>Port type</i>
frei omit	Seitenanschluss <i>Side ports</i>
E	Hintenanschluss <i>Rear ports</i>
Pos. 3	Schluckvolumen <i>Displacement</i>
80	80,5 cm ³ /U <i>ccm/rev</i> [4.91 in ³ /rev]
100	100,0 cm ³ /U <i>ccm/rev</i> [6.10 in ³ /rev]
125	125,7 cm ³ /U <i>ccm/rev</i> [7.67 in ³ /rev]
160	159,7 cm ³ /U <i>ccm/rev</i> [9.74 in ³ /rev]
200	200,0 cm ³ /U <i>ccm/rev</i> [12.20 in ³ /rev]
250	250,0 cm ³ /U <i>ccm/rev</i> [15.30 in ³ /rev]
315	314,9 cm ³ /U <i>ccm/rev</i> [19.20 in ³ /rev]
400	397,0 cm ³ /U <i>ccm/rev</i> [24.20 in ³ /rev]
475	474,6 cm ³ /U <i>ccm/rev</i> [28.96 in ³ /rev]
525	522,7 cm ³ /U <i>ccm/rev</i> [31.88 in ³ /rev]
565	564,9 cm ³ /U <i>ccm/rev</i> [34.47 in ³ /rev]

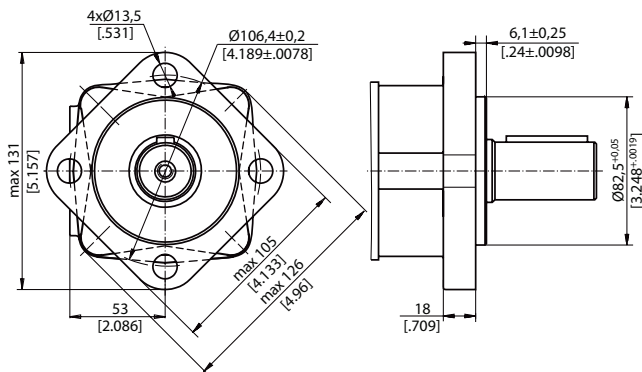
Pos. 4	Abtriebswelle * <i>Shaft *</i>
frei omit	Für B, S, U und V Flansch <i>For B, S, U and V flange</i>
C	Zylindrisch Ø32, Passfeder A10x8x45 DIN 6885 <i>Cylindrical Ø32, parallel key A10x8x45 DIN 6885</i>
CO	Zylindrisch Ø1 1/4", Passfeder 5/16" x 5/16" x 1 1/4" BS46 <i>Cylindrical Ø1 1/4", parallel key 5/16" x 5/16" x 1 1/4" BS46</i>
K	Konisch 1:10 Ø35, Passfeder B6x6x20 DIN 6885 <i>Tapered 1:10 Ø35, parallel key B6x6x20 DIN 6885</i>
SL	Zapfwelle Ø34,85, DIN 9611 Form 1 <i>P.T.O.-shaft Ø34,85, DIN 9611 Form 1</i>
SH	Verzahnt Ø1 1/4", 14 Zähne ANS B92.1-1970 <i>Splined Ø1 1/4", 14T ANS B92.1-1970</i>
SA	Verzahnt Ø7/8", 13 Zähne ANS B92.1-1970 <i>Splined Ø7/8", 13T ANS B92.1-1970</i>
Pos. 5	Anschlüsse <i>Ports</i>
frei omit	BSPP (ISO 228)
M	Metrisch <i>metric</i> (ISO 262)
Pos. 6	Lage des Bremshebels ** <i>Actuating direction **</i>
/R	Rechts <i>Right</i>
/L	Links <i>Left</i>
Pos. 7	Sonderausführungen <i>Special features</i>
RS	Drehzahlsensor <i>Speed sensor</i>
T	Tachowelle <i>Tacho connection</i>
LL	Geringeres Lecköl <i>Low Leakage</i>
LSV	Ventil für geringe Drehzahlen <i>Low speed valve</i>
R	Drehrichtung umgedreht <i>Reverse rotation</i>
P	Lackiert (Farbe auf Anfrage) <i>Paint (Colour on request)</i>
PC	Korrosionsschutzfarbe (Farbe auf Anfrage) <i>Corrosion protected paint (Colour on request)</i>
Pos. 8	Design Serie <i>Design series</i>
frei omit	Betriebsspezifisch <i>Factory specified</i>

* Zulässige Momentabgabe darf nicht überschritten werden
Permissible output torque should not be exceeded

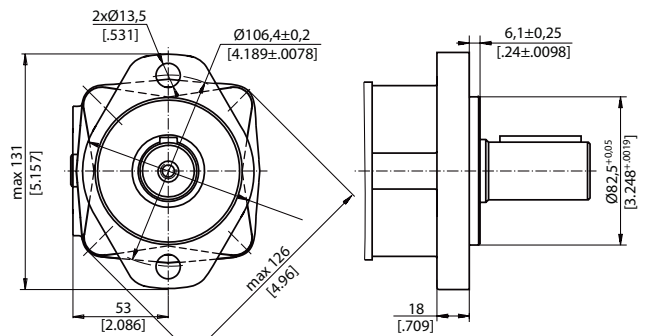
** Nur für EPMS-B
Only for EPMS-B

Pos. 1 Montageflansch *Mounting flange*

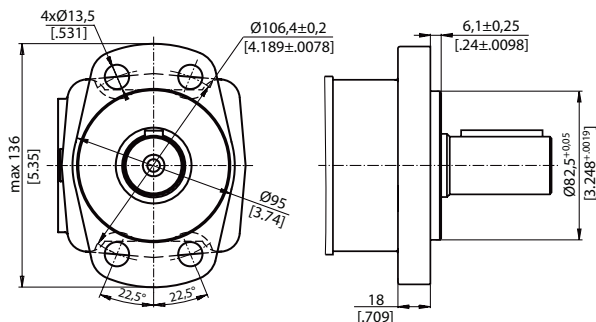
Standard: SAE A-4, vier Befestigungslöcher
Standard: SAE A-4, four holes



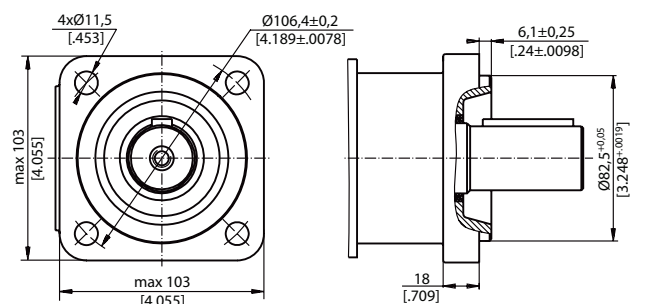
Option A: SAE A-2, zwei Befestigungslöcher
Option A: SAE A-2, two holes



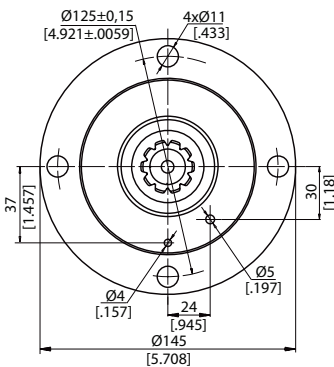
Option F: Magnetflansch, vier Befestigungslöcher
Option F: Magnetflange, four holes



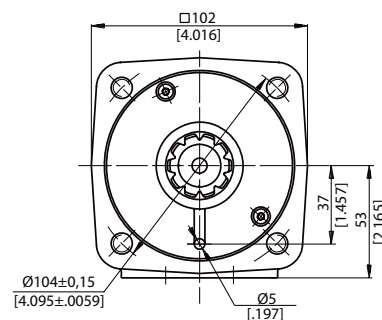
Option Q: Quadratflansch, vier Gewindebohrungen
Option Q: Square mount, four bolts



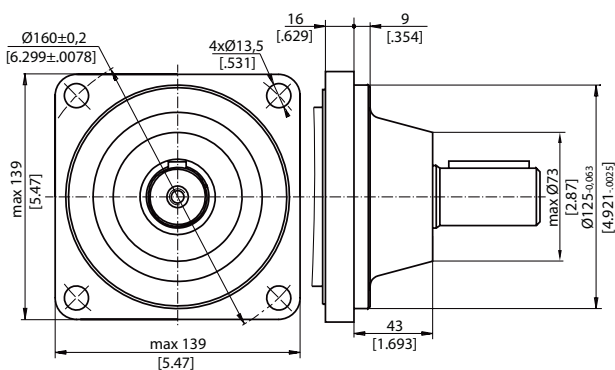
Option S: Kurzeinbau
Option S: Short mount



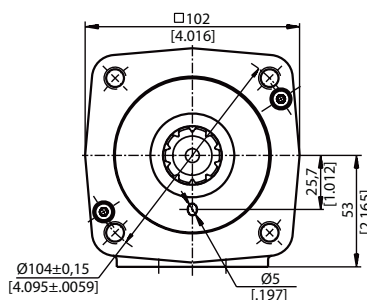
Option V: Sehr kurzer Einbau
Option V: Very short mount



Option W: Radflansch
Option W: Wheel flange

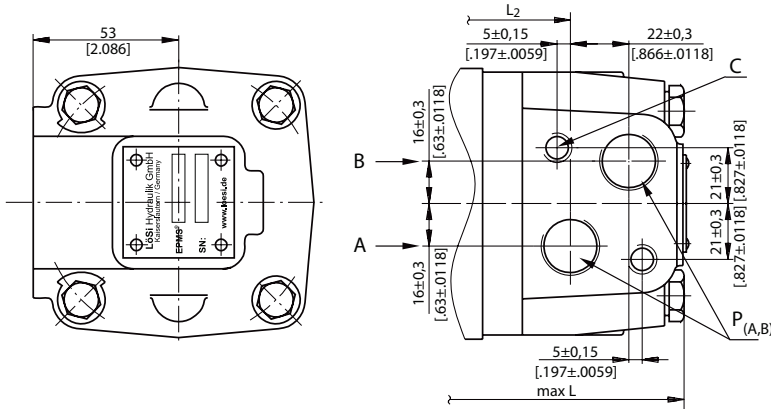


Option U: Ultra kurzer Einbau
Option U: Ultra short mount



Pos. 2 Anschlussstyp Port type

Standard: Seitenanschluss
Standard: Side ports

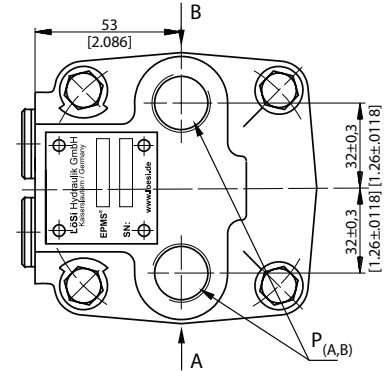


C: 2xM10 - 12mm [.47 in] tief deep
P (A,B): 2xG1/2 oder 2xM22x1,5 - 15mm [.59 in] tief deep
T: G1/4 oder M14x1,5 - 12 mm [.47 in] tief deep

Standarddrehung
mit Blick auf Abtriebswelle
Druck auf Anschluss A - rechtsdrehend
Druck auf Anschluss B - linksdrehend

Reversierdrehung (Pos. 7 - Option R)
mit Blick auf Abtriebswelle
Druck auf Anschluss A - linksdrehend
Druck auf Anschluss B - rechtsdrehend

Option E: Hintenanschluss
Option E: Rear ports

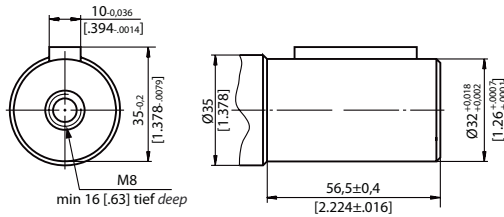


Standard rotation
Viewed from shaft end
Port A pressurized- right running
Port B pressurized- left running

Reversierdrehung (Pos. 7 - Option R)
Viewed from shaft end
Port A pressurized- left running
Port B pressurized- right running

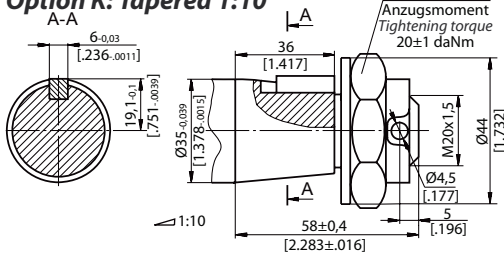
Pos. 4 Abtriebswelle Shaft

Option C: Zylindrisch Ø32 mm
Option C: Cylindrical Ø32 mm



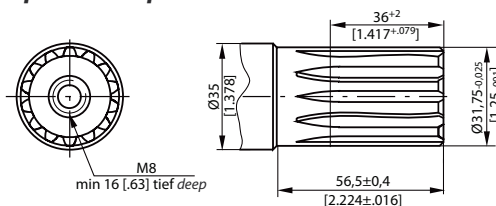
Max. Drehmomentabgabe 77 daNm [6815 lb-in]
Max. Torque 77 daNm [6815 lb-in]

Option K: Konisch 1:10
Option K: Tapered 1:10



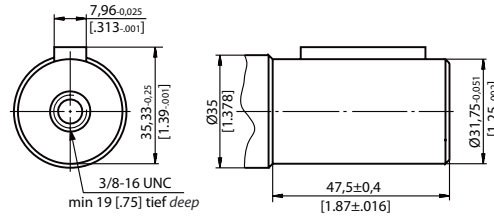
Max. Drehmomentabgabe 95 daNm [8400 lb-in]
Max. Torque 95 daNm [8400 lb-in]

Option SH: Verzahnt 14 Zähne ANS B92.1-1970
Option SH: Splined 14T ANS B92.1-1970



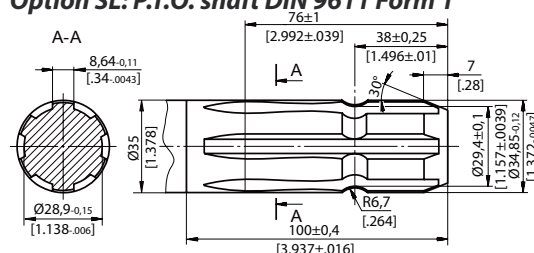
Max. Drehmomentabgabe 95 daNm [8400 lb-in]
Max. Torque 95 daNm [8400 lb-in]

Option CO: Zylindrisch Ø1 1/4"
Option CO: Cylindrical Ø1 1/4"



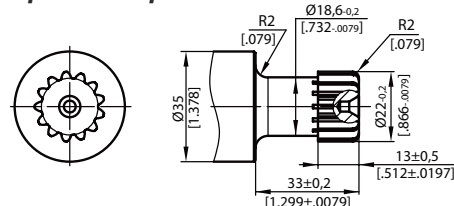
Max. Drehmomentabgabe 77 daNm [6815 lb-in]
Max. Torque 77 daNm [6815 lb-in]

Option SL: Zapfwelle DIN 9611 Form 1
Option SL: P.T.O. shaft DIN 9611 Form 1



Max. Drehmomentabgabe 77 daNm [6815 lb-in]
Max. Torque 77 daNm [6815 lb-in]

Option SA: Verzahnt 13 Zähne ANS B92.1-1970
Option SA: Splined 13T ANS B92.1-1970

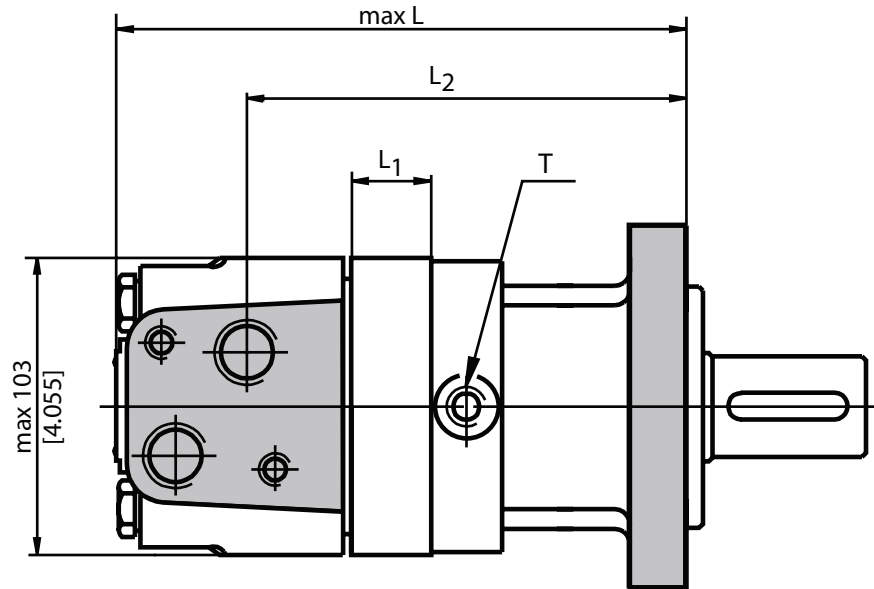


Max. Drehmomentabgabe 20 daNm [1770 lb-in]
Max. Torque 20 daNm [1770 lb-in]



Pos. 3 Schluckvolumen *Displacement*

Einbaumaße EPMS mm [in.]
 Dimensions EPMS mm [in.]



Typ Type	L mm [in]	L ₂ mm [in]	Typ Type	L mm [in]	L ₂ mm [in]	Typ Type	L mm [in]	L ₂ mm [in]	L ₁ mm [in]
EPMS (F) (A) 80	168,0 [6.61]	124,0 [4.88]	EPMS-W 80	129,0 [5.08]	87,0 [3.43]	EPMS-Q 80	179,0 [7.05]	136,0 [5.35]	14,0 [.55]
EPMS (F) (A) 100	171,0 [6.73]	128,0 [5.04]	EPMS-W 100	133,0 [5.23]	91,0 [3.58]	EPMS-Q 100	183,0 [7.21]	140,0 [5.51]	17,4 [.69]
EPMS (F) (A) 125	176,0 [6.93]	132,0 [5.20]	EPMS-W 125	137,0 [5.39]	95,0 [3.74]	EPMS-Q 125	187,0 [7.36]	144,0 [5.67]	21,8 [.86]
EPMS (F) (A) 160	182,0 [7.17]	138,0 [5.43]	EPMS-W 160	143,0 [5.63]	101,0 [3.98]	EPMS-Q 160	193,0 [7.60]	150,0 [5.91]	27,8 [1.09]
EPMS (F) (A) 200	189,0 [7.44]	145,0 [5.71]	EPMS-W 200	150,0 [5.91]	108,0 [4.25]	EPMS-Q 200	200,0 [7.87]	157,0 [6.18]	34,8 [1.37]
EPMS (F) (A) 250	197,0 [7.76]	154,0 [6.06]	EPMS-W 250	159,0 [6.26]	117,0 [4.61]	EPMS-Q 250	209,0 [8.23]	166,0 [6.54]	43,5 [1.71]
EPMS (F) (A) 315	209,0 [8.23]	165,0 [6.50]	EPMS-W 315	170,0 [6.69]	128,0 [5.04]	EPMS-Q 315	220,0 [8.66]	177,0 [6.67]	54,8 [2.16]
EPMS (F) (A) 400	223,0 [8.78]	179,0 [7.05]	EPMS-W 400	184,0 [7.24]	143,0 [5.63]	EPMS-Q 400	235,0 [9.25]	192,0 [7.56]	69,4 [2.73]
EPMS (F) (A) 475	237,0 [9.33]	193,0 [7.60]	EPMS-W 475	198,0 [7.79]	156,0 [6.14]	EPMS-Q 475	247,0 [9.72]	205,0 [8.07]	82,6 [3.25]
EPMS (F) (A) 525	229,0 [9.02]	185,0 [7.28]	EPMS-W 525	190,0 [7.48]	148,0 [5.83]	EPMS-Q 525	240,0 [9.45]	197,0 [7.76]	74,5 [2.93]
EPMS (F) (A) 565	235,0 [9.25]	191,0 [7.52]	EPMS-W 565	196,0 [7.72]	154,0 [6.06]	EPMS-Q 565	246,0 [9.69]	203,0 [7.99]	80,2 [3.16]

Für Hintenanschluss L + 6 mm [.24 in]
 For rear ports L + 6 mm [.24 in]

Technische Daten *Technical datas*

Typ <i>Type</i>	EPMS 80	EPMS 100	EPMS 125	EPMS 160	EPMS 200	
Schluckvolumen <i>Displacement cm³/U ccm/rev [in³/rev]</i>	80,5 [4.91]	100,0 [6.10]	125,7 [7.67]	159,7 [9.74]	200,0 [12.20]	
Max. Drehzahl <i>Max. Speed</i> U/min <i>RPM</i>	Dauerbetrieb <i>Continuous working</i>	810	750	600	470	375
	Intermittierend* <i>Intermittent *</i>	1000	900	720	560	450
Max. Drehmoment <i>Max. Torque</i> daNm [lb-in]	Dauerbetrieb <i>Continuous working</i>	24,0 [2120]	30,5 [2700]	37,5 [3320]	49,0 [4340]	61,0 [5400]
	Intermittierend* <i>Intermittent *</i>	31,0 [2740]	39,0 [3450]	49,0 [4380]	60,0 [5310]	72,0 [6370]
Max. Leistungsabgabe <i>Max. Output</i> kW [HP]	Dauerbetrieb <i>Continuous working</i>	15,5 [20.8]	18,0 [24.1]	18,0 [24.1]	16,5 [22.1]	16,5 [22.1]
	Intermittierend* <i>Intermittent *</i>	19,5 [26.2]	22,8 [30.2]	22,5 [30.2]	23,0 [30.8]	22,0 [29.5]
Max. Druckgefälle <i>Max. Pressure drop</i> bar [PSI]	Dauerbetrieb <i>Continuous working</i>	210 [3050]	210 [3050]	210 [3050]	210 [3050]	210 [3050]
	Intermittierend* <i>Intermittent *</i>	275 [3990]	275 [3990]	275 [3990]	275 [3990]	275 [3990]
	Spitze ** <i>Peak **</i>	295 [4280]	295 [4280]	295 [4280]	295 [4280]	295 [4280]
Max. Ölstrom <i>Max. Oil flow</i> l/min <i>lpm</i> [GPM]	Dauerbetrieb <i>Continuous working</i>	65 [17]	75 [20]	75 [20]	75 [20]	75 [20]
	Intermittierend* <i>Intermittent *</i>	80 [21]	90 [24]	90 [24]	90 [24]	90 [24]
Max. Eingangsdruck <i>Max. Inlet pressure</i> bar [PSI]	Dauerbetrieb <i>Continuous working</i>	230 [3340]	230 [3340]	230 [3340]	230 [3340]	230 [3340]
	Intermittierend* <i>Intermittent *</i>	295 [4280]	295 [4280]	295 [4280]	295 [4280]	295 [4280]
	Spitze ** <i>Peak **</i>	300 [4350]	300 [4350]	300 [4350]	300 [4350]	300 [4350]
Max. Rücklaufdruck mit Leckölleitung <i>Max. Return pressure with drain line</i> bar [PSI]	Dauerbetrieb <i>Continuous working</i>	140 [2030]	140 [2030]	140 [2030]	140 [2030]	140 [2030]
	Intermittierend* <i>Intermittent *</i>	175 [2540]	175 [2540]	175 [2540]	175 [2540]	175 [2540]
	Spitze ** <i>Peak **</i>	210 [3050]	210 [3050]	210 [3050]	210 [3050]	210 [3050]
Max. Anlaufdruck mit unbelasteter Welle <i>Max. starting pressure with unloaded shaft</i>	12 [175]	10 [145]	10 [145]	8 [115]	8 [115]	
Min. Anlaufmoment bei max. Druckgefälle <i>Min. starting torque at max. pressure</i> drop daNm [lb-in]	Dauerbetrieb <i>Continuous working</i>	18,0 [1590]	23,0 [2040]	29,0 [2570]	37,0 [3270]	47,0 [4160]
	Intermittierend* <i>Intermittent *</i>	23,5 [2080]	30,0 [2660]	38,0 [3360]	46,0 [4070]	56,0 [4960]
Min. Drehzahl *** <i>Min speed ***</i>	10	10	8	8	6	
Gewicht <i>Weight</i> kg [lb]	EPMS (F)	9,9 [21.8]	10,1 [22.2]	10,4 [22.9]	10,8 [23.8]	11,2 [24.7]
	EPMS-W	10,4 [22.9]	10,6 [23.3]	10,9 [24.0]	11,3 [24.6]	11,7 [25.8]
	EPMS-S	7,9 [17.4]	8,1 [17.8]	8,4 [18.5]	8,8 [19.4]	9,2 [20.2]
	Für Hintenanschluss <i>For rear ports</i> +0,40 [.88]	EPMS-V / EPMS-U	5,8 [12.8]	6,0 [13.2]	6,3 [13.9]	6,7 [14.8]
	EPMS-Q	10,3 [22.7]	10,5 [23.2]	10,8 [23.2]	11,2 [24.7]	11,6 [25.6]
	EPMS-B	16,9 [37.3]	17,1 [37.7]	17,4 [38.3]	17,8 [39.2]	18,2 [41.1]

* Intermittierend: Betrieb max. 10% pro Minute

** Spitze: max. 1% pro Minute

*** Für Drehzahlen kleiner der min. Drehzahl sprechen Sie uns bitte an.

- Intermittierende Druckgefälle und Ölströme dürfen nicht gleichzeitig erreicht werden.

- Minimale Viskosität 13 mm²/s [70 SUS] bei 50° C [122° F]

- Maximale Öltemperatur während des Betriebs 82° C [180° F]

- Die Lebensdauer der Motoren kann erhöht werden, wenn die Antriebswelle 10-15 Minuten vor voller Belastung frei läuft.

* Intermittent: Working max. 10% per minute

** Peak: max. 1% per minute

*** For speeds lower than given, please consult us.

- Intermittent speed and pressure should not occur simultaneously.

- Recommended minimum oil viscosity 13 mm²/s [70 SUS] at 50° C [122° F]

- Recommended maximum system operating temperature is 82° C [180° F]

- To assure optimum motor life fill with fluid prior to loading and run at moderate load and speed for 10-15 minutes.